



# UNIVERSITY OF ALBERTA

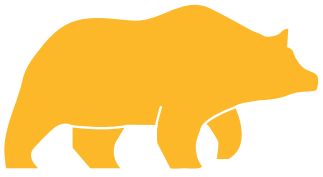
## Van Vliet Complex FACILITIES GUIDE



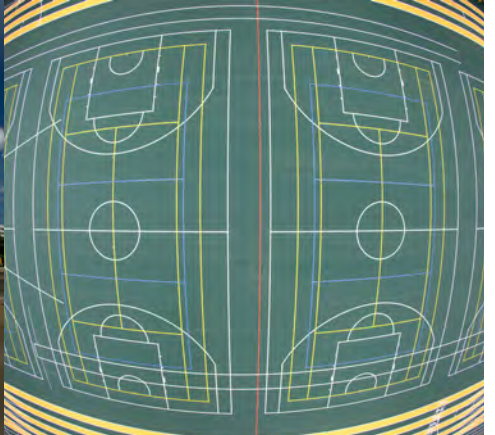
**UNIVERSITY  
OF ALBERTA**



CAMPUS & COMMUNITY  
RECREATION



# WELCOME



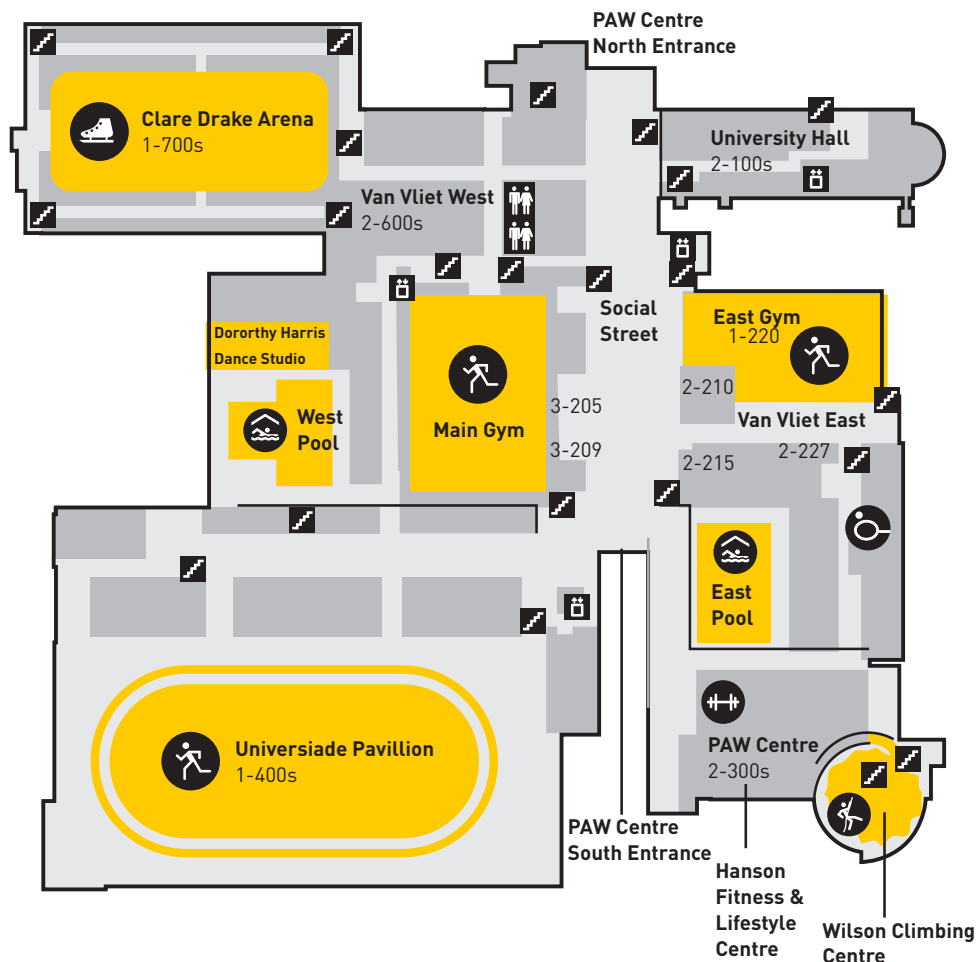


# Contents

Map .....	4
Highlights.....	5
Universiade Pavilion .....	6
Main Gym .....	8
Social Street .....	10
East Gym.....	12
Dorothy Harris Dance Studio .....	13
Clare Drake Arena .....	14
Amenities and Services	
<i>Student Lounge</i> .....	15
<i>Multi-Purpose Rooms</i> .....	15
<i>Wilson Climbing Centre</i> .....	17
<i>Hanson Fitness and Lifestyle Centre</i> .....	18
<i>Aquatics Centre</i> .....	19

# Map

The Van Vliet Complex is centrally located on the University of Alberta North Campus. It is close to Lister Residence, QUAD and Student's Union Building with easy access to parking and public transportation (ie. LRT and Bus terminal). All buildings within the Van Vliet Complex are wheel-chair friendly.





## HIGHLIGHTS

Home to a wide range of high-caliber sporting facilities and amenities, the Faculty of Physical Education and Recreation at the University of Alberta offers the perfect location for events.

With over 400,000 sq. feet spanning across 37 facilities, we have the perfect venue to showcase your event. By bringing your event to campus you'll be tapping into a community of students, staff and residents who are passionate about supporting community and sporting events.

- › Three (3) Gymnasiums
- › Universiade Pavilion
- › Five (5) multi-purpose studios
- › Nine (9) lecture theaters and classrooms
- › Fitness Centre
- › Climbing Centre
- › Aquatics Centre (two pools)
- › Three (3) lounges
- › Large Social Street Atrium
- › Dorothy Harris Dance Studio



# UNIVERSIADE PAVILION

The Universiade Pavilion is a 70,000 sq. ft. multi-purpose indoor complex that houses a seven-lane, 200 metre track with Mondo floor surface, and a two-level bleacher seating with 5,500 capacity. The Pavilion can house sporting events to craft shows, ceremonies and career fairs. The expansive floor space and soaring ceiling allows for various activities to take place here.

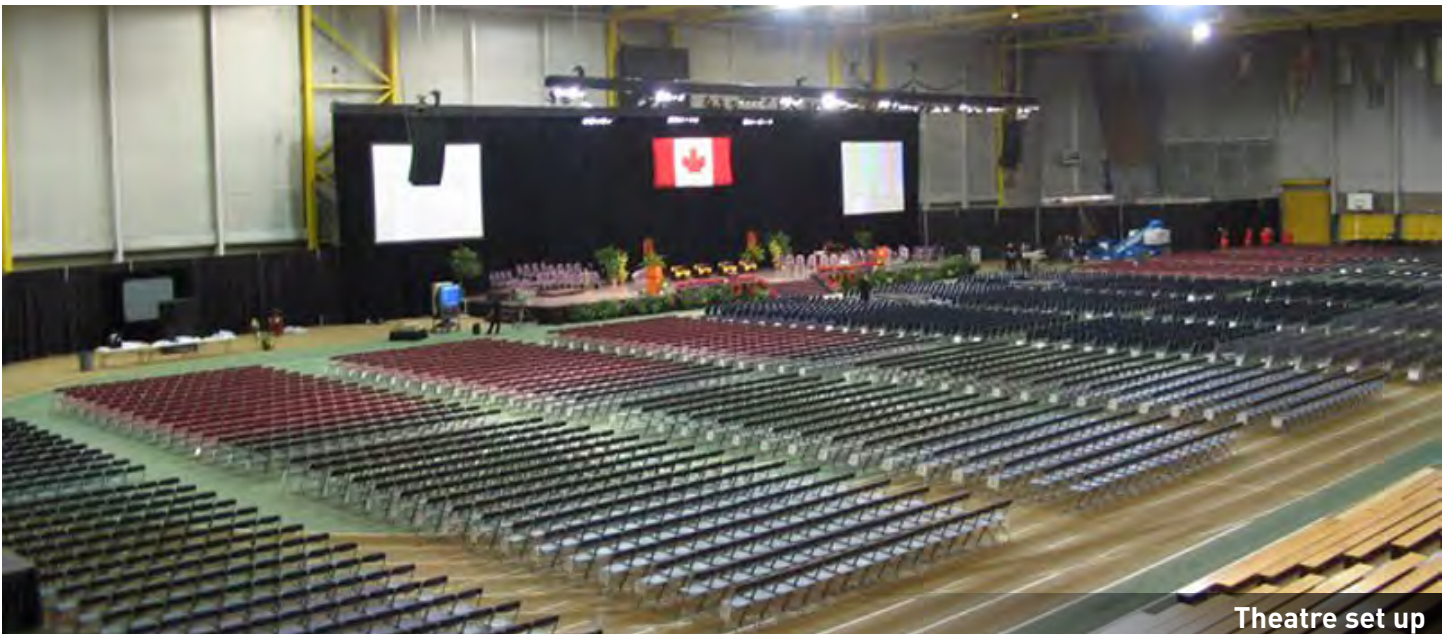
From the over-sized load in door, large enough to fit a semi truck, to the multiple entrances, the Pavilion is the perfect location for large events.

## FEATURES

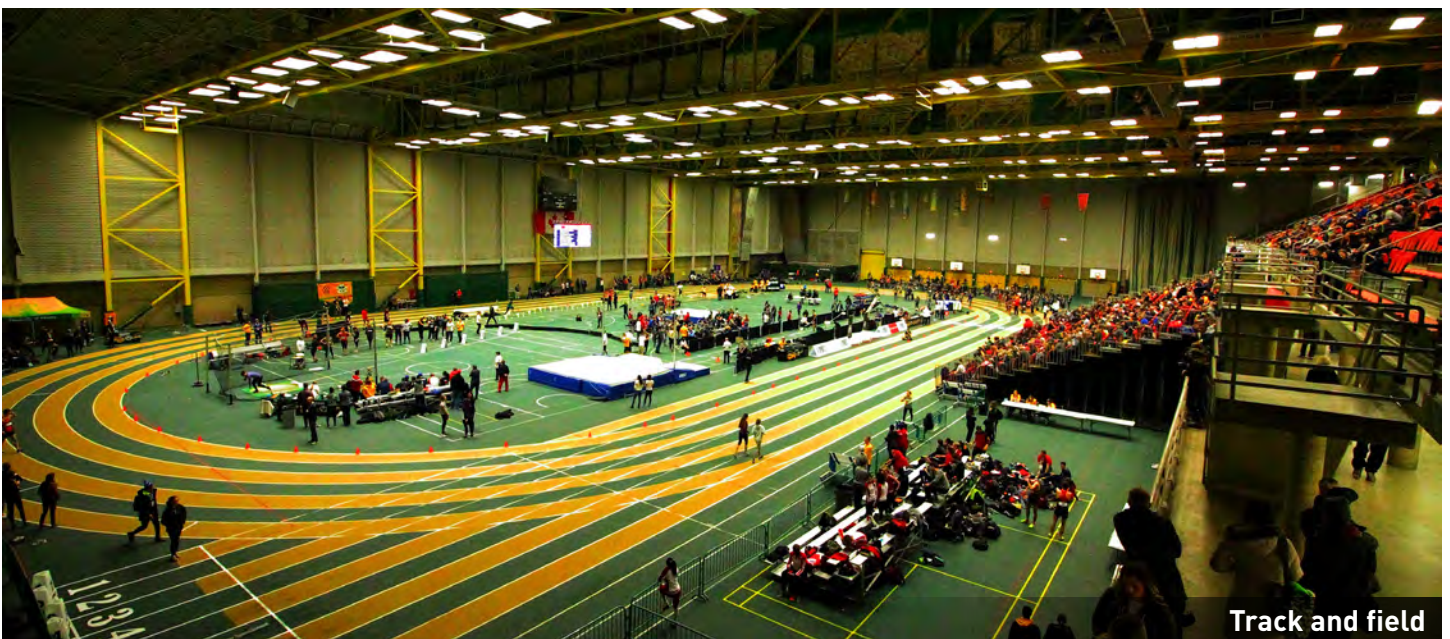
- ▶ 64,000 sq. ft. with a seating capacity of 5,355, and standing capacity of 5,745
- ▶ Luminescence: 802 lux or 74.05 FC
- ▶ 15 amp, 240V and other electrical configurations available.



Booth set up



Theatre set up



Track and field



## MAIN GYM

The Main Gym is located in the Van Vliet Complex on level two. Centrally located, the Main Gym has three different viewing areas external to the space: full glass windows onto Social Street with casual seating as well as two multi-purpose rooms with floor to ceiling windows overlooking from level three.

### Features

- ▶ 18,000 sq. ft. of hardwood floor
- ▶ 875 chair back retractable bleacher seating, with option for additional seating on North and South end zones
- ▶ 2,200 maximum occupancy
- ▶ Retractable curtain to divide the gym in half
- ▶ Raised media access location
- ▶ Washrooms with accessibility access



Paint Night



Basketball



## PAW CENTRE

# Social Street

Located within the Physical Activity and Wellness Centre, the Social Street is an atrium-like structure incorporating services and gathering spaces. The Social Street, by nature of its design, activates and energizes a pedestrian thoroughfare that will serve as a major access point to the campus and your event. The space features expansive open spaces, an abundance of natural light, viewing windows into the Main Gym and a third-level viewing area and pedway.

### Features

- › 29,622 sq. ft.
- › Raised seating area
- › Food vendor
- › Perfect for receptions, displays/booths





## EAST GYM

Located on level one of the Van Vliet Complex, the East Gym, complete with hardwood flooring, is great for multi-purpose space receptions and activities.

### Features

- › 7,360 sq. ft.
- › 570 capacity
- › Mirrors
- › Ballet Bars



# DOROTHY HARRIS DANCE STUDIO

Recently opened in spring 2016, this brand new dance studio offers state-of-the-art hardwood flooring designed specifically for dance activities. The flooring has a unique bounce to it, making it comfortable under the dancers feet. Utilize this special dance studio for practices and recitals.

## Features

- ▶ Hardwood floors
- ▶ Ballet bars on both East and West walls
- ▶ Frosted windows on East wall with window blinds
- ▶ 5917 sq. ft. (97' long by 61' wide)
- ▶ Audio/visual capacities include: projector, AV ports in the wall, Mic ports and white-board/cork-boards
- ▶ Lighting: Florescent



# CLARE DRAKE ARENA

Located on North Campus, the Clare Drake Arena is home to the Golden Bears and Pandas Varsity Athletic Teams, as well as numerous Campus & Community Recreation programming.

## Features

- 2,600 seating capacity
- 16,490 sq. ft. of ice
- 4 locker rooms

# AMENITIES AND SERVICES

The Van Vliet Complex offers a variety of multi-purpose rooms throughout the facility. Whether you are looking to host a meeting, small conference, or outfit an office or volunteer lounge, there is bound to be a room that will fit your specific need.



## STUDENT LOUNGE

The Student Lounge features soft seating and a combination of low and high top tables with chairs, two-sided fireplace and ample natural light. This lounge is great for receptions and private functions.

### Features

- › 1,515 sq. ft.
- › 60 capacity



Room 3-205

## MULTI-PURPOSE ROOMS

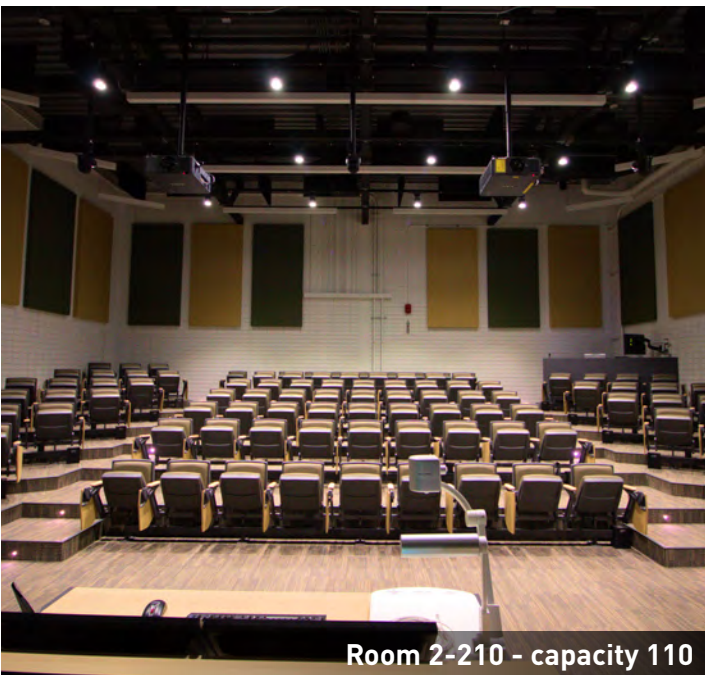
The multi-purpose rooms can be used empty, set up in a lecture or classroom configuration, or can be used as a reception area with round tables.

### Room 3-205 & 3-209

- › 1,280 sq. ft.
- › 60 capacity
- › Large mounted TV for presentation hook-ups
- › built in speaker system



Minerva - capacity 20



Room 2-210 - capacity 110



Room 2-215 - capacity 180



Room 2-227 - capacity 40

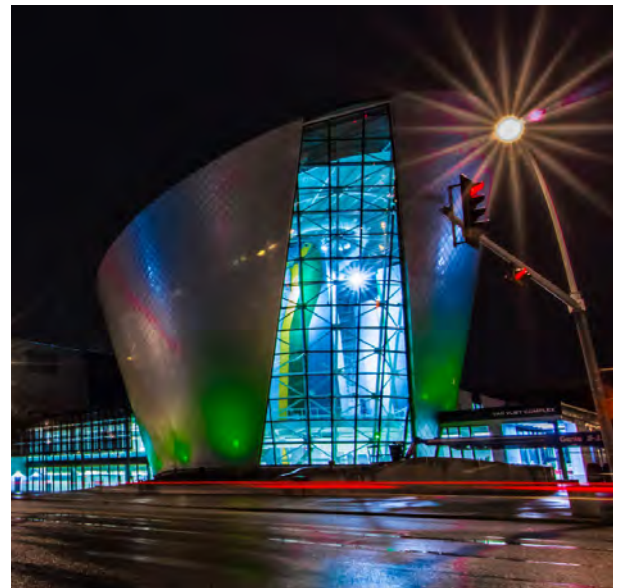


Room 2-155 - capacity 20



## WILSON CLIMBING CENTRE

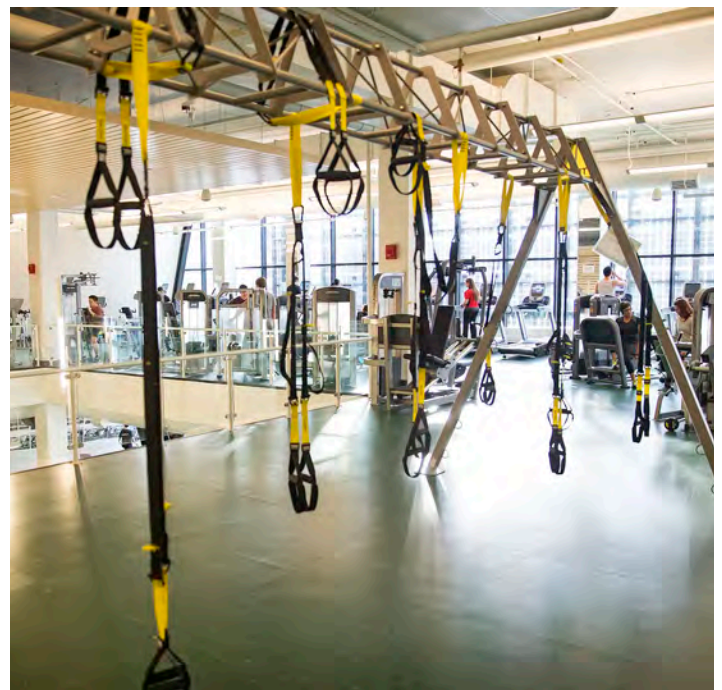
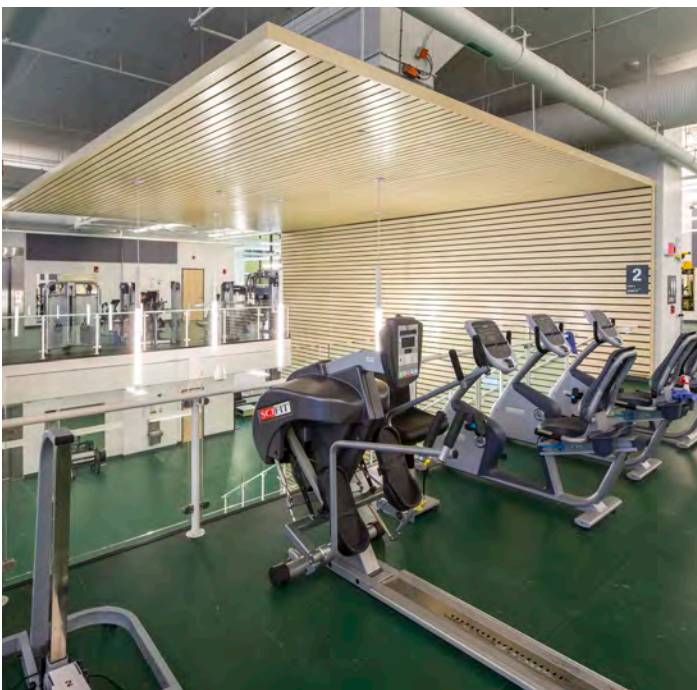
The Wilson Climbing Centre, located within the PAW Centre is a modern climbing structure. It was designed with an iconic purpose: to create a new gateway to the University of Alberta's North Campus. It features a bouldering lounge with over 2,700 square feet of space; a high wall loft with over 7,000 square feet of climbing; 19 anchors for top roping and 16 anchors for lead climbing.





## HANSON FITNESS AND LIFESTYLE CENTRE

The Hanson Fitness and Lifestyle Centre is located in the PAW Centre and spans over two levels. This state-of-the-art facility features brand new equipment, floor to ceiling windows to let in natural light and all the equipment you would ever need to work out.





## AQUATICS CENTRE

The Aquatic Centre houses two large indoor pools: the East Pool and the Winslow and Christian Hamilton Memorial Pool, commonly known as the West Pool. Both pools are located in the Van Vliet Complex. Our pools can be used for several types of recreational use such as adult and children swim lessons, water aerobics and water polo.





For booking inquiries, contact

Van Vliet Complex,  
780.492.7424

[bookings@ualberta.ca](mailto:bookings@ualberta.ca)

Book online at [uab.ca/recreation](http://uab.ca/recreation)



**UNIVERSITY  
OF ALBERTA**



CAMPUS & COMMUNITY  
RECREATION