



Welcome to
Fort McMurray

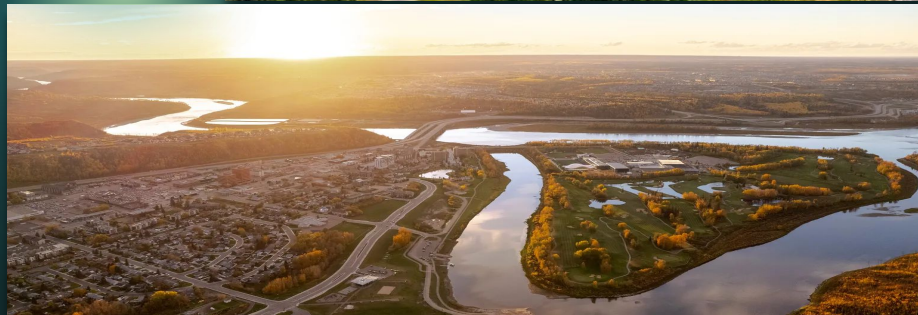
LOCATION

The scenic drive on AB Hwy 63 (twinned) or two lane paved Hwy 881 are both through agricultural land followed by the boreal forest is approximately 4 hour drive from Edmonton and 7 hours from Calgary

Divided Highway



City Centre



Airport

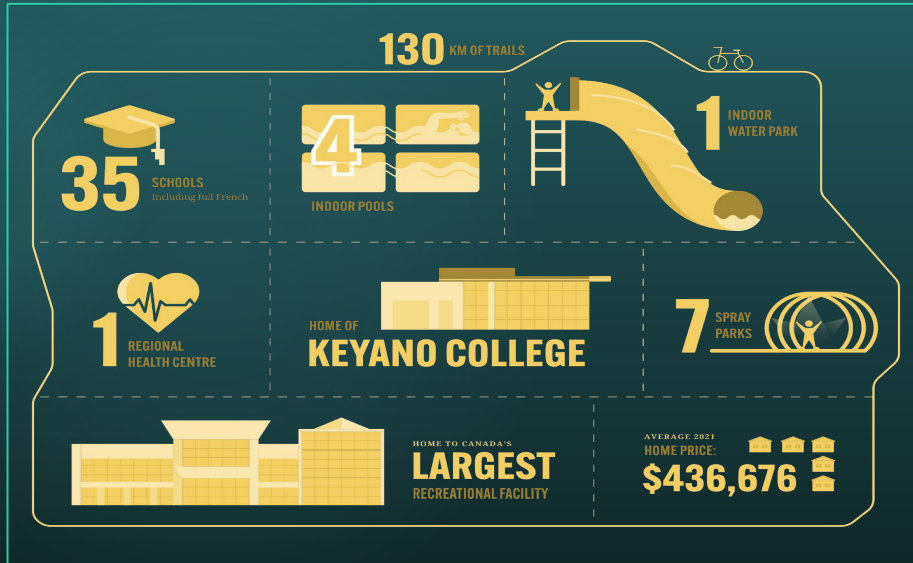


1. FORT FITZGERALD
2. FORT CHIPEWYAN
3. FORT MCKAY
4. FORT MCMURRAY
5. DRAPER
6. SAPRAE CREEK ESTATES
7. GREGOIRE LAKE ESTATES
8. ANZAC
9. JANVIER
10. CONKLIN



LIFESTYLE

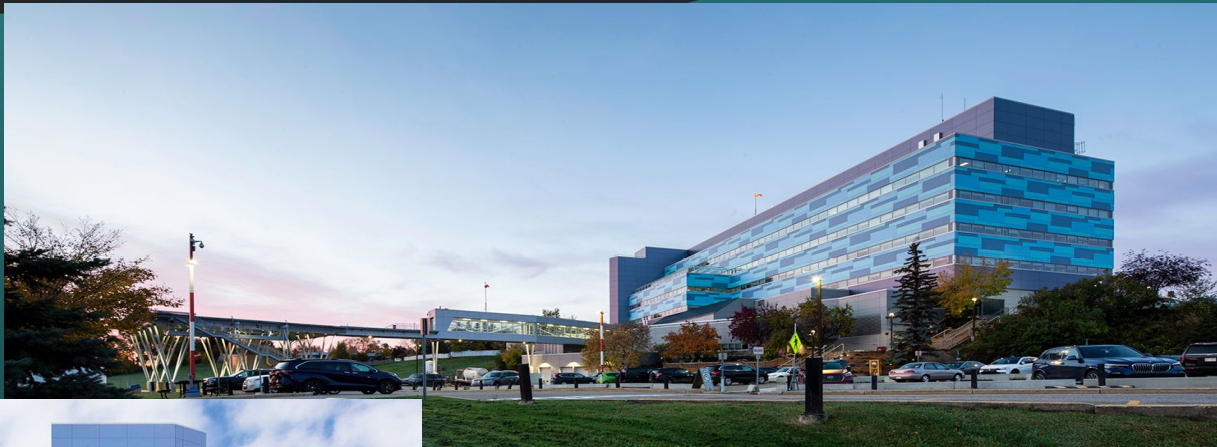
- Population is 80,568
- Wood Buffalo Regional Municipality serves 106,059
- Community enjoys a quality of life that is safe, diverse and affordable
- Home to a vibrant arts, diverse cultural scene, an abundance of nature, space to move and thrive.



NORTHERN LIGHTS REGIONAL HEALTH CENTRE

Specialties:

Internal Medicine
Ob/Gyn
Ophthalmology
Orthopedics, Trauma & Spine
Adult & Child Psychiatry, Addictions & Mental Health
Pediatrics
Emergency Department
Geriatric Medicine
Hospital Medicine
Critical Care Medicine
General Surgery
Urology
Radiology
Anesthesia
Palliative Care
Oncology
Long-Term Care



Outpatient Services:

24/7 Emergency
Wound Clinic
Endoscopy
Colposcopy
Minor Surgery
Infusion Clinic
Orthopedic Clinic
Allied Health
APL

Satellite Oncology Clinic
(with Cross Cancer Institute)
Satellite Dialysis Clinic
(with Alberta Renal Program)
Diagnostic Imaging (X-Ray,
CT, Ultrasound, MRI,
Mammography
and Fluoroscopy)

WILLOW SQUARE CONTINUING CARE

108 bed continuing care centre that operates as a campus model with support services extending from NLRHC

Three levels of care:

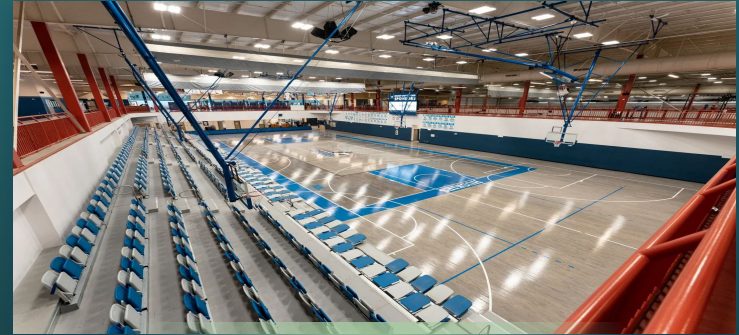
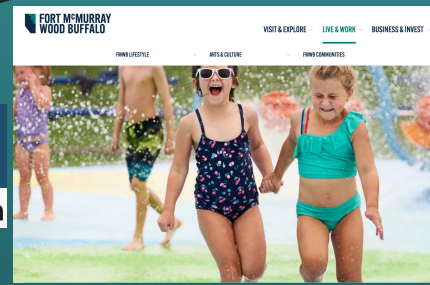
- DSL 4D
- Dementia Care
- LTC



ACTIVITIES AND AMENITIES



MACDONALD ISLAND PARK



KEYANO COLLEGE



LIVE AND WORK

Discover Northern Alberta Incentives

The Northern Incentives Program is comprised of non-pensionable allowances tailored uniquely to employees whose work sites fall within specific geographic areas in Northern Alberta.

The allowances are separate and non-cumulative, and are provided to all employees, including those working with AHS on a temporary basis, as shown below.

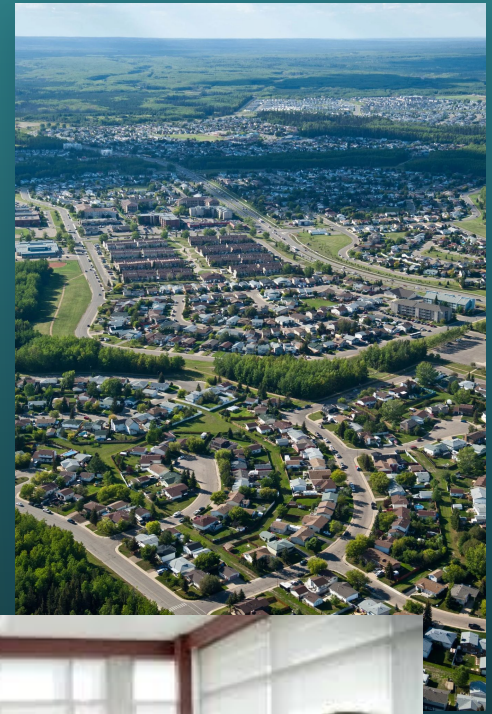
NORTHERN ALLOWANCE - FTE \$6300

REMOTE RETENTION ALLOWANCE - FTE \$3000

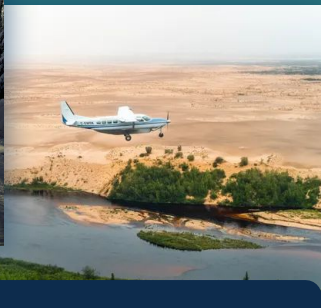
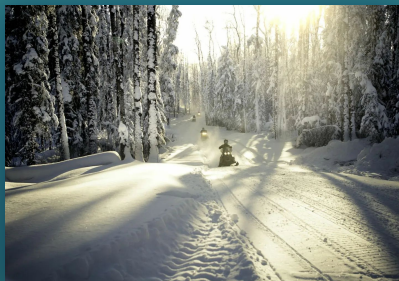
FORT MCMURRAY ALLOWANCE - FTE \$12,480

TRAVEL REIMBURSEMENT - 1 ROUND TRIP PER YEAR WITHIN ALBERTA

(<https://www.albertahealthservices.ca/careers/Page12214.aspx>)



FORT McMURRAY WOOD BUFFALO



Join us and Enjoy the Lifestyle of the North!